



The Circular Economy Drives Value Creation

LINEAR

Linear supply chains are costly, susceptible to volatility and harmful to our environment.

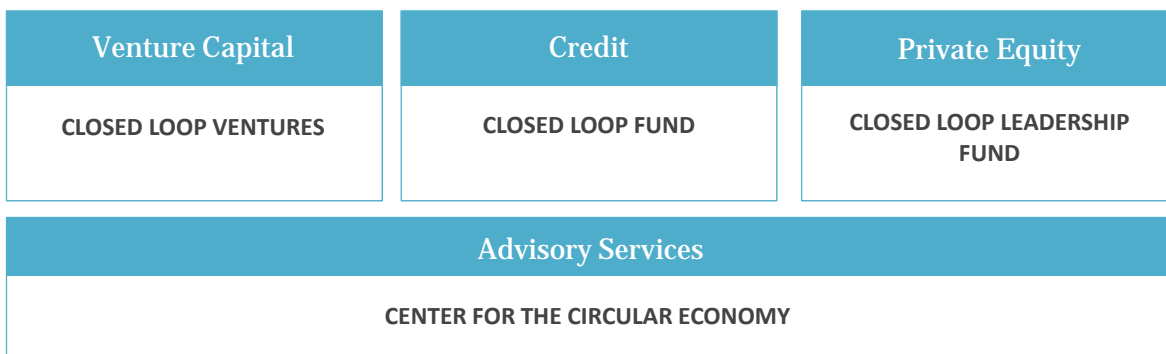


CIRCULAR

Circular supply chains reduce costs, increase efficiency and create a sustainable form of capitalism that aligns the interests of industry, consumers and government.



We Invest In The Circular Economy



Our Competitive Advantage

NETWORK

Our investors include the world's largest retailers and consumer goods companies, family offices, foundations and financial institutions.



INDUSTRY EXPERIENCE

Our team includes industry CEOs, CFOs, fund managers and former heads of government agencies.



TRACK RECORD

Over 40 investments since 2015.



We Span the Supply Chain



CONSUMER PRODUCTS

- For Days
- Linhaus
- Loliware
- Natural Machines
- Preserve
- The Renewal Workshop



COLLECTION

- Curb My Clutter
- City of Memphis
- City of Moline
- City of Waterbury
- CoLoadX
- Easy Aerial
- Portage County
- Tradelanes
- Waste Commission of Scott County



PROCESSING

- AMP Robotics
- Atlas Organics
- City of Phoenix
- Council Bluffs
- ECUA
- Eureka
- Evrnu
- FirstStar
- HomeBiogas
- ITR/Ecoglass
- Lakeshore
- Momentum
- PureCycle



DESIGN/ MANUFACTURING

- AeroAggregates
- Cambridge Crops
- CleanFiber
- GreenMantra
- IntegriCo
- Rebound Technologies
- TemperPack
- rPlanet Earth



Industry Sectors

- MUNICIPAL RECYCLING
- FOOD TECH AND AGRICULTURE
- ELECTRONICS
- FASHION AND APPAREL
- PACKAGING

Our Impact is Global

CALIFORNIA

Alameda County, CA
Drought Diet Products
For Days
Full Cycle BioPlastics
rPlanet Earth Tradelanes

COLORADO

AMP Robotics
Momentum
Rebound Technologies

CONNECTICUT

Renewal Mill Waterbury

FLORIDA

ECUA

GEORGIA

Georgia Tech

ILLINOIS

Lakeshore
Recycling
City of Moline

INDIANA

Indiana Recycling
Coalition

IOWA

Council Bluffs Scott
County

LOUISIANA

IntegriCo

MASSACHUSETTS

Cambridge Crops
Preserve

MICHIGAN

BioWorks Energy

MINNESOTA

Eureka Recycling

NEBRASKA

FirstStar

NEVADA

TemperPack

NEW YORK

CleanFiber CoLoadX
CurbMyClutter
Easy Aerial
Linhaus
Loliware

OHIO

Portage County
PureCycle

OREGON

The Renewal Workshop

PENNSYLVANIA

AeroAggregates
Zzyzx

SOUTH CAROLINA

Atlas Organics

TENNESSEE

Memphis

TEXAS

ITR/Ecoglass

VERMONT

Vermont Natural Ag Products

WASHINGTON

Evrnu
Hold That Tray



ISRAEL

HomeBiogas

CANADA

GreenMantra

SPAIN

Natural Machines

Thought Leadership

Papers published by Closed Loop Partners



ReFED (2016)

Partnered on report on food waste solutions based on their ability to merge strong economic returns with optimal social and environmental benefit.



Cleaning the rPET Stream (2017)

Report that identifies recycling system interventions that reduce the cost of processing post-consumer PET, compared to producing virgin resin.



Used Electronics Recycling (2016)

Report on the e-waste landscape within the United States in order to understand types and quantities moving into the waste stream today and in the future.



Capital Landscape Study (2018)

Study looking at the trends, gaps and impacts of financing for recycling infrastructure.



Plastic Film Recycling (2016)

National study to understand bottlenecks holding back recycling of post consumer LDPE film and multi-laminate film packaging recycling.



Circular Supply Chains for Plastics (2019)

A landscape study of the transformational technologies that are turning plastic waste into building blocks for new materials

Industry Leadership

JUNE 2015

Innovations in the Circular Economy

Co-hosted in partnership with the Ellen MacArthur Foundation



Closed Loop Partners and the Ellen MacArthur Foundation brought together leaders from government, corporations, recycling companies and innovative circular economy companies to share innovations and insights, and build connections across sectors.

OCTOBER 2017

Circular Supply Chains Summit

Co-hosted in partnership with Google



Closed Loop Partners convened over 100 leaders from the largest cities, retailers, consumer goods companies, universities, and investment firms to discuss the opportunity to infuse significantly more capital into circular supply chains.

DECEMBER 2018

Building Circular Supply Chains For Polypropylene In North America

Co-hosted in partnership with Keurig Dr. Pepper



Closed Loop Partners convened 30 leaders from across the polypropylene (PP) value chain, all of whom are working to keep post-consumer PP in our curbside recycling programs and build more efficient and productive circular supply chains for North America.

Network

INDUSTRY



ACADEMIC & RESEARCH



FIRMS THAT WE CO-INVESTED WITH



o CLOSED LOOP PARTNERS

8

Closed Loop Partners Team



Ron Gonen
CEO



Martin Aares
Managing Director



Maite Quinn
Managing Director



Michael Gajewski
Managing Director



Caroline Brown
Managing Director



Kate Daly
Managing Director



Bridget Croke
VP, External Affairs



Bob Milligan
Managing Director



Alicia Mandelkow
Chief of Staff



Danielle Joseph
Director, CLV



Chris Cui
Director, China Programs



Ellen Martin
VP, CLF



Erik Avni
Controller



Luba Melnikova
Director, Research & Due Diligence



Dan Liswood
Director, NextGen Consortium



Georgia Sherwin
Communications Associate



Dan Moccia-Field
Data Analyst



Allison Sellers
Investment Associate

o CLOSED LOOP PARTNERS

Advancing Recycling Technologies in North America

10

Growing Market Demand

Corporate buyers are driving a capital shift to supply chains.

The largest consumer goods companies are transitioning to circular supply chains that utilize sustainable and recycled material in order to reduce costs and volatility.

In order to reach their targets, the largest consumer goods companies will **shift \$750b in linear supply chains to circular supply chains.**



2025 target
100% reusable, recyclable or compostable plastic packaging



2030 target
100% reusable, recyclable or compostable plastic packaging



2030 target
100% of products to be recyclable globally and bottles to use 50% recycled content



2025 target
100% of packaging to be recyclable, compostable or biodegradable



2025 target
100% zero waste to landfill from production facilities and offices



The Healthy Hydration Company™

2025 target
100% recyclable or reusable packaging

Case Study: AMP Robotics



Focused on reducing the fundamental costs of recycling through the use of artificial intelligence.

AMP's solution is a combination of state of the art computer vision and robotic products that can rapidly identify and recover material from the waste stream.

Case Study: AMP Robotics



Case Study: AMP Robotics



80 Picks Per Minute

3 Shifts Per Day

Case Study: Curb My Clutter










Recycling as simple as sending a text.

CURB MY CLUTTER enables haulers and municipalities to conveniently communicate with customers via text to collect and recycle clothing and electronics.

Case Study: Curb My Clutter



HOW IT WORKS

-  **TEXT** "pickup" to 610-TEXT-CMC (610-839-8262)
-  **SNAP** photos of your items
-  **PICK** an appointment time that works for you
-  **BAG/BOX** your used electronics and clothing
-  **LEAVE** them outside for pickup
-  **EARN** rewards
-  **FEEL GOOD** about reducing landfill waste!

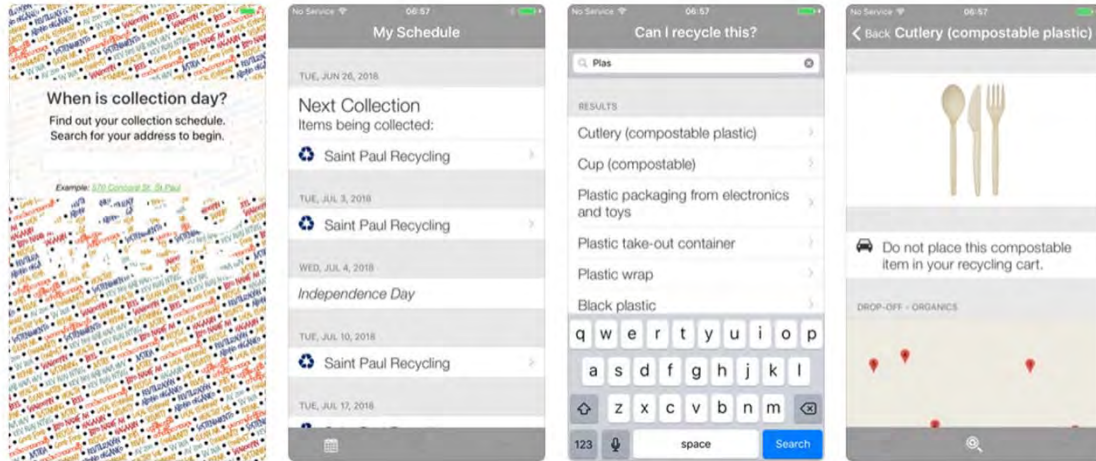
Case Study: Eureka



Eureka Recycling is a nonprofit social enterprise based in the Twin Cities, whose mission is to demonstrate that waste is preventable, not inevitable. We provide recycling collection and processing services, servicing 200,000 households and sorting over 90,000 tons a year. Their programs and policy work present solutions for local economic development, climate change, and environmental justice.



Case Study: Eureka



Case Study: Revolution

Modular MRF System for Small Communities



Thank you

Contact: ron@closedlooppartners.com

